

THERMOMARK™ 5155/5255

INSULATED SECTIONAL STEEL DOORS



INSULATED FLUSH DOORS PROVIDE EXCELLENT VALUE

ThermoMark™ 5155 and 5255 insulated doors combine strength, insulation, and aesthetic appeal for commercial projects requiring all three of these features.

Wayne Dalton ThermoMark™ insulated doors help improve thermal efficiency and provide year-round comfort to the building's occupants. Hot-dipped galvanized steel and rugged construction will give years of solid performance for the most demanding conditions.

» EXCELLENT THERMAL QUALITIES

» 5155: R-VALUE = 12.12
U-VALUE = .0825

» 5255: R-VALUE = 16.22
U-VALUE = .0616

» STANDARD SIZES UP TO
20' HIGH AND 26' WIDE

» RUGGED AND DURABLE

THERMOMARK™ 5155/5255

STANDARD FEATURES OVERVIEW

THERMAL EFFICIENCY

	Model 5155	Model 5255
R-VALUE	12.12	16.22
U-VALUE	.0825	.0616
THERMAL BREAK	Yes	Yes
AIR INFILTRATION	.23 cfm at 15 mph	.07 cfm at 15 mph
IECC	Meets IECC® requirements for maximum U-factor of operable fenestrations and ASHRAE 90.1 and IECC® requirements for maximum air leakage of fenestration assemblies.	

CONSTRUCTION

MAX HEIGHT	20'1"	20'1"
MAX WIDTH	20'2"	26'2"
EXTERIOR STEEL	0.015" (.35 mm)	0.015" (.35 mm)
INTERIOR SURFACE	Flush	Flush
EXTERIOR SURFACE	Stucco embossed	Stucco embossed
STANDARD SPRINGS	10,000 cycles	10,000 cycles
SOUND TRANSMISSION	Class 20	Class 20

COLOR OPTIONS

INTERIOR COLOR	White	White
EXTERIOR COLOR	White, Almond, Taupe, Brown	White, Almond, Taupe, Brown

WARRANTY

TERMS†	Ten (10) year limited
--------	-----------------------

OPTIONS

- Chain hoist operation
- Motor operation
- High cycle spring (25k, 50k, 100k)
- 3" Track option
- Solid shafts
- Perimeter weatherseal
- Broken cable devices
- Sensing edges
- Photo eyes
- Special track designs
- Mullions

*Wayne Dalton uses a calculated door section R-value and U-value for our insulated doors.
†See warranty for full details.

ThermoMark™ insulated doors are designed to deliver rugged durability combined with thermal efficiency.

These insulated doors, featuring CFC and HCFC-free polyurethane foam insulation, are available with two different R-values.

The ThermoMark™ 5255 is rated with an R-value* of 16.22, while the ThermoMark™ 5155 features an R-value of 12.12.

MATERIALS AND CONSTRUCTION

The ThermoMark™ 5155 and 5255 both feature hot-dipped galvanized steel construction that is pre-painted prior to manufacturing with a two-coat system of polyester paint with a finished coat (includes primer).

The inside and outside skins are roll-formed and separated with a thermal break to eliminate thermal conductance.

Hinge locations have 20-gauge continuous back up plates for fastening. The bottom astragal is a two-piece bulb-type astragal to be attached to the interior skin.

Section ends have end caps of 18-gauge hot-dipped galvanized steel, and a between-section joint seal is standard.

Contact Wayne Dalton for additional sizes and colors.

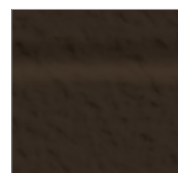
FINISH OPTIONS



White embossed stucco



Almond embossed stucco



Brown embossed stucco



Taupe embossed stucco

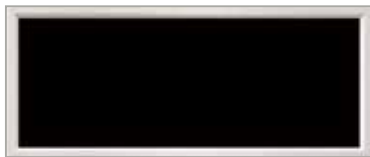
SECTIONAL STEEL DOORS



LITE OPTIONS



Vision lites



Full-view lites

DOOR CONSTRUCTION

Stucco steel back panels
for good looks and easy cleaning.

Hot-dipped, galvanized steel
wrap-around end caps add strength, rigidity and long life.

CFC and HCFC free
polyurethane foam.

Sound absorbing insulation
makes door quieter in operation;
reduces wind rattling.

Two-coat, baked-on polyester
finish makes surface virtually
maintenance free.

Bulb-shaped bottom seal
remains flexible even in extreme
cold to help keep the bad weather
outside.



GENERAL OPERATING CLEARANCES

TYPE	HEADROOM		SIDEROOM		DEPTH INTO ROOM	CENTER LINE OF SPRINGS	
	2" TRACK	3" TRACK	2" TRACK	3" TRACK	2" AND 3" TRACK	2" TRACK	3" TRACK
Standard Lift Manual 12" R	13"-17"	NA	4.5"	5.5"	Opening Height +18"	Opening Height +12"	N/A
Standard Lift Manual 15" R	15"-20"	16"-21"				Opening Height +13"	Opening Height +14"
Standard Lift Motor Oper. 12" R	15"-20"	NA			Opening Height +66"	Opening Height +12"	N/A
Standard Lift Motor Oper. 15" R	15"-20"	18"-24"				Opening Height +13"	Opening Height +14"
High Lift Manual	High Lift +12"		24" One Side		Opening Height -Lift +30"	Opening Height +Lift +6.5"	Opening Height +Lift +7.5"
High Lift Motor Oper.							
Vertical Lift Manual	Door Height +20"		4.5"	5.5"	Opening Height +18"	Double Door Height +13"	
Vertical Lift Motor Oper.			24" One Side				
Low Headroom Manual	6"-15"	6"-15"	6"	9"	Opening Height +20"-26"	N/A	
Low Headroom Motor Oper.	9"-17"	9"-17"			Opening Height +66"		

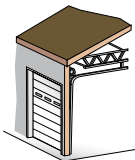
NOTES:

- For low headroom, springs must be rear mount to achieve minimum headroom listed. Front mount torsion headroom depends on drum size, and varies over the range listed. See approval drawings.
- Side-room of 8" required, one side, for doors with chain hoist.
- Headroom depends on drum size, and varies over the range listed. See approval drawings.

PANEL/SECTION SELECTION GUIDE

DOOR WIDTH	NUMBER OF PANELS	NUMBER OF LITES	DOOR HEIGHT	NUMBER OF SECTIONS
8'2" to 9'2"	2	2	Up to 8'1"	4
9'3" to 12'2"	3	3	8'2" to 10'1"	5
12'3" to 16'2"	4	4	10'2" to 12'1"	6
16'3" to 19'2"	5	5	12'2" to 14'1"	7
19'3" to 24'2"	6	6	14'2" to 16'1"	8
24'3" to 26'2"	7	7	16'2" to 20'1"	9
			18'2" to 20'1"	10

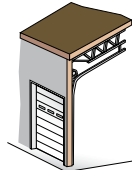
TRACK SELECTION GUIDE



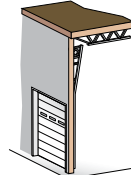
STANDARD LIFT



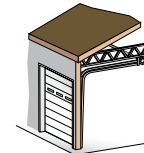
HIGH LIFT
break-away is standard, straight incline is available



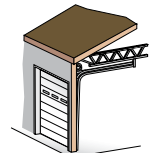
ROOF PITCH
standard or high lift



VERTICAL LIFT
break-away is standard, straight incline is available



LOW HEADROOM
rear mount torsion



LOW HEADROOM
front mount torsion



Architect Resource Center

Visit wayne-dalton.com/architect-resource-center to find our Architect Resource Center. In this tool, you will quickly find all of the specifications, drawings and documents you need to complete your project.

Wayne Dalton
COMMERCIAL DOORS

DISTRIBUTED BY:

Fray Pedro de Gante 85, Cimataro, Santiago de Querétaro, Querétaro, México CP 76030

(442) 727-0441

contacto@klh.com.mx

klh de México
www.klh.com.mx